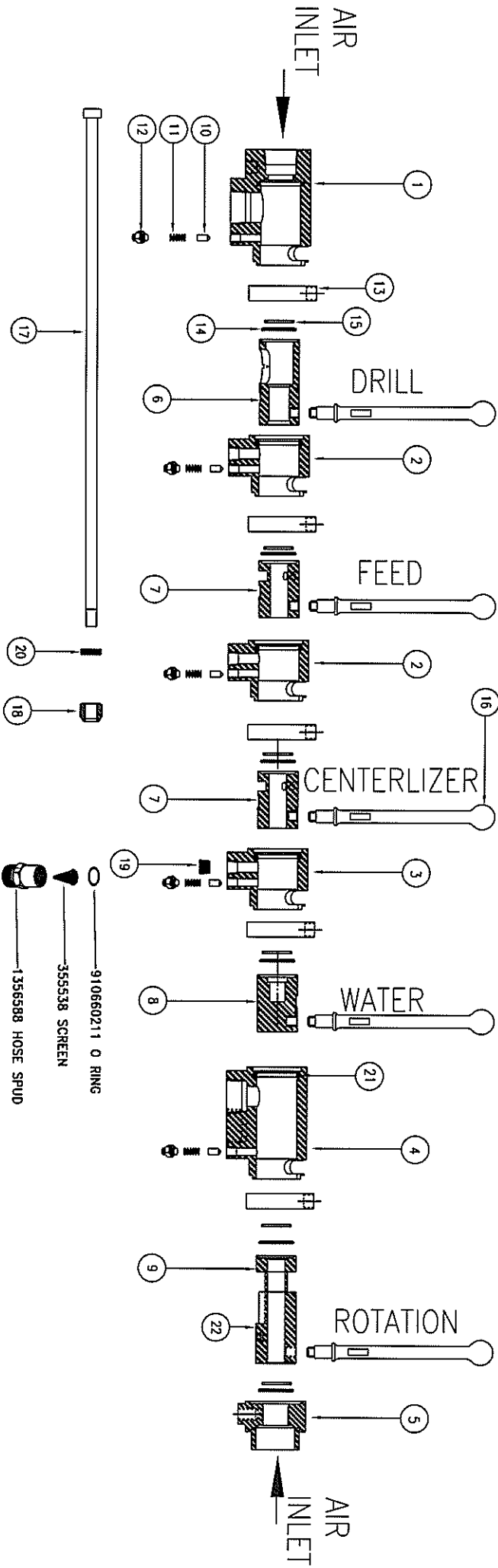


PARTS EAD QUARTERS INC.

1175 APPLEBY LINE, UNIT C2, BURLINGTON, ONTARIO, L7L 5H9
 TEL: 905-332-5271 FAX: 905-332-9497 TOLL FREE: 800-267-2082
 INTERNET: www.partsHQ.com



ITEM	QTY	PART No.	DESCRIPTION
1	1	A12411	MACHINE HOUSING
2	2	B19491	FEED CENTERIZER HOUSING
3	1	B18931	AIR WATER HOUSING C/W ITEM # 22
4	1	A1840	ROTATION HOUSING
5	1	A1849	ROTATION INLET 1 1/2" NPT
6	1	B18911A	MACHINE VALVE C/W ITEM # 25
7	2	B18971A	FEED CENTERIZER VALVE C/W ITEM # 25
8	1	B18951A	AIR WATER VALVE C/W ITEM #25,17,18,19 AND 26
9	1	B2644	ROTATION VALVE C/W ITEM # 25
10	5	D1830	PLUNGER
11	5	S3030	SPRING
12	5	D1829	SCREW C/W NUT (7/16" UNF)
13	5	C25071	COVER

ITEM	QTY	PART No.	DESCRIPTION
14	6	164241P60	O RING
15	6	D1831	SEAL RING
16	5	C2806	HANDLE
17	2	C3256	BOLTS
18	2	900490103	NUT
19	1	90192113	PIPE PLUG (3/8" NPT)
20	2	17412022	SPACER
21	5	164451P60	O RING
22	5	164241P60132	O RING (OPTIONAL)

REMOTE CONTROL 21002
 WEIGHT 73 POUNDS
 LENGTH 24 1/2"